

ZHEJIANG UN FORKLIFT CO., LTD.

Address: NO.1, Road One, Xindeng New District, Fuyang, Hangzhou, Zhejiang 311404, China

Tel: +86-571-86888355 (America)

+86-571-88869363 (Europe)

+86-571-86888377 (Asia, Africa, Oceania)

E-mail: info@unforklift.com

Parts Inquiry: parts@unforklift.com

[www.unforklift.com](http://www.unforklift.com)



[www.unforklift.com](http://www.unforklift.com)

The International UN Team



UNFORKLIFT

## N Series Forklift Truck

1.5-3.5 Ton Diesel Forklift

1.5-3.5 Ton Gasoline / LPG Forklift



# Reliability

**10%** **Steering System**  
The hydraulic steering system reduces the loss of hydraulic and improves energy efficiency.

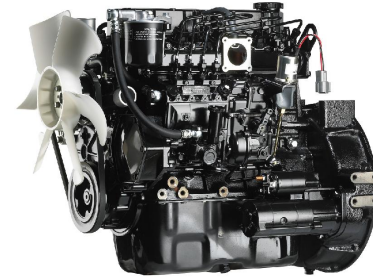
**25%** **Lifting & Driving System**  
The unique hydraulic technology increases lifting speed 25% and improves the driving speed.



**Excellent hydraulic system shows great performance in all aspects below.**

- Uses a load-sensing flow control valve for steering to reduce horsepower loss and heat buildup.
- The main hydraulic valve incorporates adjustable flow controls for tilt and auxiliary functions.
- Allows for easy addition of extra functions and simplifies service.
- Controlled lowering speed independent of load speed.

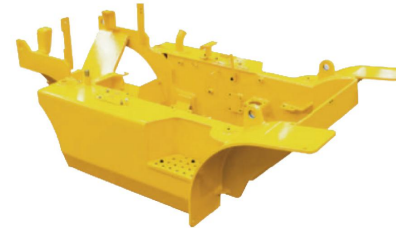
# Rugged Engine and Optimal Performance



Reaches

EPA Tier IV  
EURO III A/B

Market approved quality of Yanmar, Mitsubishi, Isuzu original engines ensure incomparable performance, durability and excellent fuel efficiency.



**Heavy Duty One-Piece Truck Frame**

Heavy duty one-piece truck frame, with its welded and formed steel plate design, protects it from impact damage and extends truck's lift span.



**New Designed Radiator**

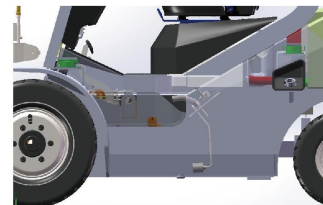
The new downsize water room of radiator reduces thickness of water conduits and extends wave length to increase ventilation and air flow rates.



**Multifunctional Instrument**

The newly designed Instrument is installed with larger screen and constant status is noticeable.

Reposition of hydraulic pipelines around the fuel tank and the enhanced cooling system increase ventilation, and make it easier to keep the high temperature of engine and oil in control, even in the harshest working environments.



# Advanced Safety



## Strong Overhead Guard

Exceeding CE or ANSI regulations, the overhead guard offers optimal protection combined with excellent all-around visibility and reduces potential danger.



## Excellent Visibility for Safe Operation

Optimized lift cylinder arrangement provides operator with wider visibility, the panoramic mirror expands the driver's view when backing up.



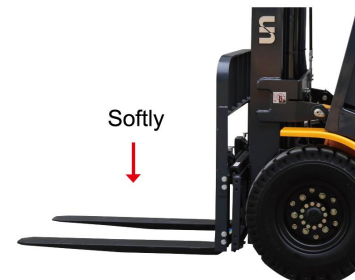
## Parking Brake

Toggle type parking brake requires less effort from the operator to set.



## Fork Safety Features

When the forks are being lowered, a down-control valve maintains the controlled speed. The down-safety valve prevents forks from dropping down in case of sudden damage of hydraulic line.

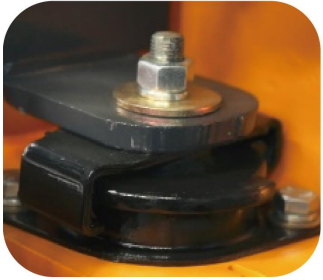


## OPS (Optional)

This comprehensive safety system includes a seat-driven power interruption device with a mast lock. When the operator leaves the seat, the system automatically disables certain functions such as lifting, lowering, and driving, preventing accidental operations.



# Optimized Ergonomics



## The Latest Anti-Vibration and Shock Absorbing System

The anti-vibration rubber is installed between the guard and truck frame to reduce the source of vibration and noise while driving. This will not only reduce operator's fatigue but will also increase safety.



## Superior Comfort from Suspension Design

The suspension cab and seat design reduces travel vibration by 30%, so the operator feels less fatigue and greater comfort during the operations.



## Steering Adjuster

To achieve a comfortable drive position, the angle of the steering column can easily be adjusted. The steering wheel can be adjusted by a lever on the left-hand side to improve operator's comfort.



## Steering Wheel



## Ergonomically Positioned Pedals

Based on human engineering, the accelerator, brake and inching pedals are optimally positioned for operator's convenience and reduce operator's fatigue.



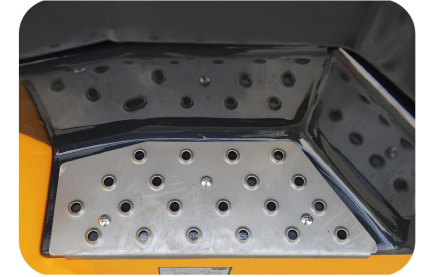
## Fuel Cap

Manufactured from durable, long life materials and made for proper sealing and venting.



## Switch and Buzzer

Emergency light switch and beacon.



## Lower Entrance Height

The lower entrance height ensures easy and safe access for the operator. Wide open step offers convenience and safety when entering and exiting truck.



## Comfortable Seat

Great comfort is offered to the driver by a suspension seat with weight adjuster.



## Transmission Filter Inspection Port

Easy check from small cover on the foot plate.

# Fast and Easy Maintenance



### Wide Opening Engine Hood

Easily accessible engine compartment assures fast and efficient maintenance.



### Easy Change of Air Cleaner

The air filter is readily accessible for cleaning or replacement.

### Quick and Easy Engine Oil Check



### Easy Gas Tank Change

The LPG cylinder is easily installed and the swing down bracket makes the operator remove the tank in a lower position with minimal effort.



### Easy Maintenance Oil Check

The T/M oil level can be checked easily without any disassembly.



The beautiful LCD instrument shows vital operation data of the forklift, which can make the operator have a better knowledge of the forklift state, and make the maintenance easy.

## 1.5-1.8 TON MAST SPECIFICATIONS & RATED CAPACITIES

Mast Type	Mast Name	Max. Fork Height (mm)	Load Capacity (kg)		Overall Height (mm)			Free Lift (mm)		Tilt Angle (Single)	Tilt Angle (Double)
					Lowered	Extended		Without Backrest	With Backrest		
						Without Backrest	With Backrest				
			1.5t	1.8t	1.5t/1.8t		1.5t/1.8t				
Wide View Mast	M300	3000	1500	1800	2025	3575	4055	135	140	6-12	
	M330	3300	1500	1800	2175	3875	4355	135	140	6-12	
	M400	4000	1500	1750	2575	4575	5055	135	140	6-6	*6-12
	M450	4500	1250	1550	2825	5075	5555	135	140	6-6	*6-12
	M470	4700	1100	1400	2925	5275	5755	135	140	6-6	*6-12
2-Stage Full Free Wide View Mast	M500	5000	950	1050	3125	5575	6055	135	140	6-6	*6-6
	FM300	3000	1500	1800	2025	3570	4050	1460	980	6-12	*6-12
	FM330	3300	1500	1800	2175	3920	4400	1610	1130	6-12	*6-12
	FM400	4000	1500	1800	2625	4570	5050	2000	1580	6-6	*6-12
3-Stage Full Free Wide View Mast	TFM400	4000	1500	1800	1925	4570	5035	1300	900	6-6	*6-6
	TFM450	4500	1200	1500	2075	5070	5535	1500	1050	6-6	*6-6
	TFM470	4700	1180	1400	2125	5270	5735	1565	1100	6-6	*6-6
	TFM500	5000	900	1200	2225	5570	6035	1665	1200	6-6	*6-6
	TFM550	5500	800	1000	2425	6070	6535	1800	1400	3-6	*3-6
TFM600	6000	600	700	2625	6570	7035	2000	1600	3-6	*3-6	

Note: With side shifter, load capacity subtract 150Kg.

## 2.0-2.5 TON MAST SPECIFICATIONS & RATED CAPACITIES

Mast Type	Mast Name	Max. Fork Height (mm)	Load Capacity (kg)				Overall Height (mm)			Free Lift (mm)		Tilt Angle (Single)	Tilt Angle (Double)
							Lowered	Extended		Without Backrest	With Backrest		
								Without Backrest	With Backrest				
			2.0t	2.0t (Double)	2.5t	2.5t (Double)	2.0t/2.5t		2.0t/2.5t				
Wide View Mast	M300	3000	2000		2500		2055	3580	4070	140	140	6-12	
	M330	3300	2000		2500		2205	3880	4370	140	140	6-12	
	M400	4000	2000		2450		2605	4580	5070	140	140	6-6	*6-12
	M450	4500	1800	*1900	2000	*2400	2855	5080	5570	140	140	6-6	*6-12
	M470	4700	1450	*1850	1750	*2100	2955	5280	5770	140	140	6-6	*6-12
	M500	5000	1300	*1700	1600	*2050	3155	5580	6070	140	140	6-6	*6-6
	M550	5500	1100	*1500	1350	*1700	3405	6080	6570	140	140	3-6	*3-6
	M600	6000	950	*1300	1050	*1500	3655	6580	7070	140	140	3-6	*3-6
2-Stage Full Free Wide View Mast	FM300	3000	2000		2500		2070	3605	4068	1470	1007	6-12	
	FM370	3700	2000		2500		2420	4255	4718	1800	1357	6-6	
	FM400	4000	2000		2500		2670	4605	5068	2000	1607	6-6	*6-12
	TFM450	4500	1700	*1800	2000	*2300	2145	5155	5570	1540	1140	6-6	*6-6
3-Stage Full Free Wide View Mast	TFM480	4800	1500	*1650	1800	*2100	2245	5355	5770	1640	1240	6-6	*6-6
	TFM500	5000	1400	*1600	1500	*2000	2295	5655	6070	1740	1290	6-6	*6-6
	TFM550	5500	1100	*1500	1200	*1800	2495	6155	6570	1840	1490	3-6	*3-6
	TFM600	6000	800	*1400	850	*1600	2695	6755	7170	2040	1690	3-6	*3-6

Note: With side shifter, load capacity subtract 200Kg. \* (Asterisk) is for double front wheels model.

## 3.0-3.5 TON MAST SPECIFICATIONS & RATED CAPACITIES

Mast Type	Mast Name	Max. Fork Height (mm)	Load Capacity (kg)				Overall Height (mm)			Free Lift (mm)		Tilt Angle (Single)	Tilt Angle (Double)
							Lowered	Extended		Without Backrest	With Backrest		
								Without Backrest	With Backrest				
			3.0t	3.0t (Double)	3.5t	3.5t (Double)	3.0t/3.5t		3.0t/3.5t				
Wide View Mast	M300	3000	3000		3500		2070	3590	4070	145/150	145/150	6-12	
	M330	3300	3000		3500		2220	3890	4370	145/150	145/150	6-12	
	M370	3700	3000		3400		2420	4290	4770	145/150	145/150	6-12	
	M400	4000	2950		3250		2620	4590	5070	145/150	145/150	6-6	*6-12
	M450	4500	2600	*2900	2900	*3000	2870	5090	5570	145/150	145/150	6-6	*6-12
	M470	4700	2500	*2800	2800	*2900	2970	5290	5770	145/150	145/150	6-6	*6-12
	M500	5000	2200	*2550	2400	*2800	3170	5590	6070	145/150	145/150	6-6	*6-6
	M550	5500	2000	*2400	2200	*2600	3420	6090	6570	145/150	145/150	3-6	*3-6
M600	6000	1500	*2000	1600	*2400	3670	6590	7070	145/150	145/150	3-6	*3-6	
2-Stage Full Free Wide View Mast	FM300	3000	3000		3500		2070	3590	4065	1382	907	6-12	
	FM330	3300	3000		3500		2220	3940	4415	1532	1057	6-12	
	FM370	3700	3000		3400		2420	4240	4715	1732	1257	6-6	
	FM400	4000	2950		3250		2670	4590	5065	1982	1507	6-6	*6-12
3-Stage Full Free Wide View Mast	TFM400	4000	3000	*3000	3000	*3500	2010	4720	5110	1345	955	6-6	*6-6
	TFM450	4500	2600	*2800	2800	*3200	2160	5200	5610	1520	1105	6-6	*6-6
	TFM480	4800	2300	*2600	2400	*2900	2260	5500	5910	1620	1205	6-6	*6-6
	TFM500	5000	2100	*2400	2300	*2800	2310	5700	6110	1670	1255	6-6	*6-6
	TFM550	5500	1650	*2250	1800	*2550	2510	6220	6610	1845	1455	3-6	*3-6
	TFM600	6000	1200	*2100	1300	*2300	2710	6820	7210	2045	1655	3-6	*3-6

Note: With side shifter, load capacity subtract 200Kg. \* (Asterisk) is for double front wheels model.

# N Series Internal Combustion

## Diesel Forklift 1.5t - 3.5t Main Specifications

General	1	UN									
	2	FD15T	FD18T	FD20T	FD25T	FD30T	FD35T				
3	Power Type	Diesel	Diesel	Diesel	Diesel	Diesel	Diesel				
4	Rated Load Capacity	Q(kg)	1500	1800	2000	2500	3000	3500			
5	Load Centre	C(mm)	500	500	500	500	500	500			
Characteristic & Dimension	6	Rated Lift Height	H3(mm)	3000	3000	3000	3000	3000	3000		
	7	Free Lift Height	H2(mm)	135	140	140	140	145	150		
	8	Fork Size (LxWxT)	mm	920 × 120 × 35	1070 × 120 × 40	1070 × 120 × 40	1070 × 120 × 40	1070 × 125 × 45	1070 × 125 × 50		
	9	Mast Tilt Angle (F/R, α°/β°)	deg	6°/12°	6°/12°	6°/12°	6°/12°	6°/12°	6°/12°		
	10	Fork Overhang (Wheel Center to Fork Face)	X1(mm)	409	414	460	460	475	480		
	11	Rear Overhang	X2(mm)	470	470	520	520	520	600		
	12	Ground Clearance (Bottom of Mast)	H7(mm)	110	110	110	110	125	125		
	13	Length to Face of Fork (Without Fork)	L1(mm)	2289	2294	2630	2630	2695	2780		
	14	Overall Width	B1(mm)	1082	1082	1170	1170	1225	1225		
	15	Mast Lowered Height	H1(mm)	2025	2025	2055	2055	2070	2070		
	16	Mast Extended Height (With Backrest)	H4(mm)	4055	4055	4070	4070	4070	4070		
	17	Overhead Guard Height	H5(mm)	2160	2160	2215	2215	2235	2235		
	18	Turning Radius (Outside)	Wa(mm)	2100	2100	2365	2365	2425	2500		
	19	Min.Aisle width for pallets	mm	3700	3700	4120	4120	4180	4255		
	20	Travel Speed (No Load)	km/h	14.5	14.5	19	19	19	19		
	Performance	21	Lifting Speed (Full Load)	mm/sec	560	560	510	510	430	400	
		22	Lowering Speed (Full Load)	mm/sec	No Load ≥ 300 Full Load ≤ 600						
		23	Max.Drawbar Pull (Full Load/No Load)	KN	17/14.5	17/14.5	17/14.5	17/14.5	26/21	26/21	
24		Max.Gradeability (Full Load)	%	20	20	20	20	20	20		
Chassis	25	Tyre (Front x 2)	mm	6.50 -10 -10PR	6.50 -10 -10PR	7.00 -12 -12PR	7.00 -12 -12PR	28 × 9-15 -12PR	28 × 9-15 -12PR		
	26	Tyre (Rear x 2)	mm	5.00 -8 -10PR	5.00 -8 -10PR	6.00 -9 -10PR	6.00 -9 -10PR	6.50 -10 -10PR	6.50 -10 -10PR		
	27	Front Tread	B2(mm)	890	890	970	970	1000	1000		
	28	Rear Tread	B3(mm)	920	920	980	980	980	980		
	29	Wheelbase	Y(mm)	1410	1410	1650	1650	1700	1700		
	30	Total Weight	kg	2860	2990	3620	3860	4460	4775		
Weight	31	Front Axle Weight Distribution (Full Load)	kg	3815	4120	5058	5724	6714	6997		
	32	Rear Axle Weight Distribution (Full Load)	kg	545	720	562	636	746	777		
	33	Front Axle Weight Distribution (No Load)	kg	1200	1170	1450	1545	1784	1910		
	34	Rear Axle Weight Distribution (No Load)	kg	1660	1820	2170	2315	2676	2865		
Power & Transmission	35	Battery	V/Ah	12/90	12/90	12/90	12/90	12/90	12/90		
	36	Fuel Tank Capacity	L	50	50	50	50	50	50		
	37	Transmission Type		HYDRAULIC	HYDRAULIC	HYDRAULIC	HYDRAULIC	HYDRAULIC	HYDRAULIC		
	38	Transmission Stage (FWD/RVS)		1/1	1/1	1/1	1/1	1/1	1/1		
	39	Operating Pressure (For Attachments)	Mpa	14.5	14.5	18.5	18.5	18.5	20.5		

Specifications and characteristics are subject to change without notice. Please contact us for detailed information.

## ENGINE

XINCHAI	ISUZU	MITSUBISHI	GCT	KUBOTA
Model:C490BPG -37 (EUIII) Rated output:36.8KW/2650RPM Rated torque:156N.M/1800RPM No. of cylinder:4 Bore x Stroke:90×105MM Displacement:2.67L	Model:C240NKFC-01 (EUIII) Rated output:35.4KW/2500RPM Rated torque:139N.M/1800RPM No. of cylinder:4 Bore x Stroke:86×102MM Displacement:2.36L	Model:S4S (EUIII) Rated output:35.3KW/2500RPM Rated torque:177N.M/1700RPM No. of cylinder:4 Bore x Stroke:94×120MM Displacement:3.331L	Model:GK25 Rated output:37.4KW/2500RPM Rated torque:176.5N.M/1600RPM No. of cylinder:4 Bore x Stroke:92×93MM Displacement:2.472L	Model:V2403-CR-TE5 (EUV) Rated output:42.6KW/2400RPM Rated torque:195.6N.M/1500RPM No. of cylinder:4 Bore x Stroke:87.0×102.4MM Displacement:2.434L

XINCHAI	HYUNDAI
Model: 3E22YG51(EUV) Rated output: 44.8KW/2400RPM Rated torque: 210N.M/1600-1800RPM No. of cylinder: 3 Bore x Stroke: 94 × 107MM Displacement: 2.23L	Model: D24(DM02VB EUV) Rated output: 48.2KW/2600RPM Rated torque: 214N.M/1600RPM No. of cylinder: 4 Bore x Stroke: 94 × 94MM Displacement: 2.392L

## Gasoline & LPG Forklift 1.5T - 3.5T Main Specifications

General	1	UN							
	2	FL15T FGL15T	FL18T FGL18T	FL20T FGL20T	FL25T FGL25T	FL30T FGL30T	FL35T FGL35T		
3	Power Type	Gasoline / LPG		Gasoline / LPG		Gasoline / LPG			
4	Rated Load Capacity	Q(kg)	1500	1800	2000	2500	3000	3500	
5	Load Centre	C(mm)	500	500	500	500	500	500	
6	Rated Lift Height	H3(mm)	3000	3000	3000	3000	3000	3000	
7	Free Lift Height	H2(mm)	135	140	140	140	145	150	
8	Fork Size (LxWxT)	mm	920 × 120 × 35	1070 × 120 × 40	1070 × 125 × 40	1070 × 125 × 40	1070 × 125 × 45	1070 × 125 × 50	
9	Mast Tilt Angle (F/R, α°/β°)	deg	6°/12°		6°/12°		6°/12°		
10	Fork Overhang (Wheel Center to Fork Face)	X1(mm)	409	414	460	460	475	480	
11	Rear Overhang	X2(mm)	470	470	520	520	520	600	
12	Ground Clearance (Bottom of Mast)	H7(mm)	110	110	110	110	125	125	
13	Length to Face of Fork (Without Fork)	L1(mm)	2289	2294	2630	2630	2695	2780	
14	Overall Width	B1(mm)	1082	1082	1170	1170	1225	1225	
15	Mast Lowered Height	H1(mm)	2025	2025	2055	2055	2070	2070	
16	Mast Extended Height (With Backrest)	H4(mm)	4055	4055	4070	4070	4070	4070	
17	Overhead Guard Height	H5(mm)	2160	2160	2215	2215	2235	2235	
18	Turning Radius (Outside)	Wa(mm)	2100	2100	2365	2365	2425	2500	
19	Min.Aisle width for pallets	mm	3700	3700	4120	4120	4180	4255	
20	Travel Speed (No Load)	km/h	14.5	14.5	21	21	19	19	
Performance	21	Lifting Speed (Full Load)	mm/sec	560	560	490	490	390	390
	22	Lowering Speed (Full Load)	mm/sec	No Load ≥ 300 Full Load ≤ 600					
	23	Max.Drawbar Pull (Full Load/No Load)	KN	17/14.5		17/14.5		22/18	
	24	Max.Gradeability (Full Load)	%	20	20	20	20	20	18
Chassis	25	Tyre (Front x 2)	mm	6.50 -10 -10PR		7.00 -12 -12PR		28 × 9-15 -12PR	
	26	Tyre (Rear x 2)	mm	5.00 -8 -10PR		6.00 -9 -10PR		6.50 -10 -10PR	
	27	Front Tread	B2(mm)	890	890	970	970	1000	1000
	28	Rear Tread	B3(mm)	920	920	980	980	980	980
	29	Wheelbase	Y(mm)	1410	1410	1650	1650	1700	1700
	30	Total Weight	kg	2860	2990	3620	3860	4460	4775
Weight	31	Front Axle Weight Distribution (Full Load)	kg	3815	4120	5058	5724	6714	6997
	32	Rear Axle Weight Distribution (Full Load)	kg	545	720	562	636	746	777
	33	Front Axle Weight Distribution (No Load)	kg	1200	1170	1450	1545	1784	1910
	34	Rear Axle Weight Distribution (No Load)	kg	1660	1820	2170	2315	2676	2865
Power & Transmission	35	Battery	V/Ah	12/60	12/60	12/60	12/60	12/60	12/60
	36	Fuel Tank Capacity	L	50	50	50	50	50	50
	37	Transmission Type		HYDRAULIC		HYDRAULIC		HYDRAULIC	
	38	Transmission Stage (FWD/RVS)		1/1		1/1		1/1	
	39	Operating Pressure (For Attachments)	Mpa	14.5	14.5	18.5	18.5	18.5	20.5

Specifications and characteristics are subject to change without notice. Please contact us for detailed information.

